

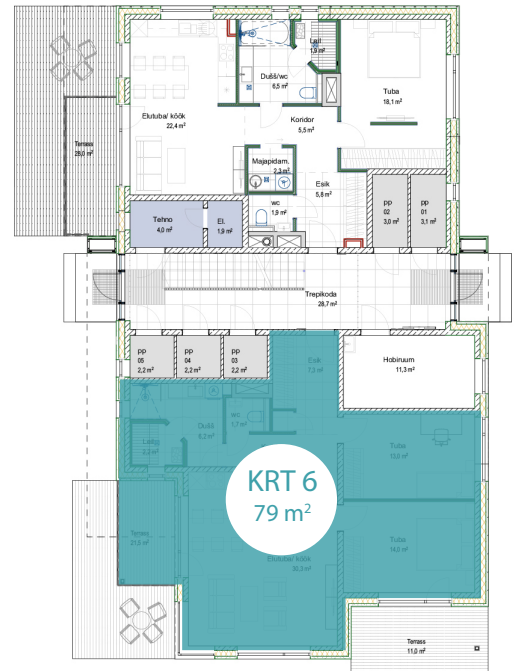
## KORTER 6

|              |   |
|--------------|---|
| TUBE         | 3                                       |
| KORRUS       | 1                                       |
| PINDALA      | 79 m <sup>2</sup>                       |
| RÕDU/TERRASS | 11 m <sup>2</sup> + 21.5 m <sup>2</sup> |
| MÜÜGIHIND    | 352 000 €                               |

LISAD:

|                   |                        |
|-------------------|------------------------|
| PANIPAIGA HIND    | 5000 €                 |
| PARKIMISKOHA HIND | 8000 €                 |
| LISAVALIKUD:      | <b>jahutusvalmidus</b> |

KORRUSE PLAAN



KORTERI PLAAN

